

Visiting Team Information

2025 College Sailing Fleet Race National Championships

Hosted by St. Mary's College of Maryland

St. Mary's City, MD

James P. Muldoon River Center at the Teddy Turner Waterfront

Annual Meeting, May 19 (Blackistone Room, Anne Arundel Hall / 12pm-6pm)

Women's Championships, May 20-23

Open Championships, May 27-30

Congratulations on earning a berth at Fleet Racing Nationals! We are very excited to host this series of championships here at St. Mary's College of Maryland. We will endeavor to make it a memorable championship for everyone involved. Please email us with any questions.

Lodging

Southern Maryland housing options include AirBNB, VRBO and most major hotel brands in Lexington Park, Leonardtown (St. Mary's County) and Solomons (Calvert County). Area hotel properties include (but are not limited to):

Country Inn and Suites by Radisson Lexington Park 240-384-2226

Fairfield Inn Lexington Park 301-863-0203

Hampton Inn Lexington Park 301-863-3200

Holiday Inn Express and Suites Lexington Park 240-237-1444

La Quinta Inn and Suites by Wyndham Lexington Park 301-678-9847

Towne Place Suites Marriott Lexington Park 301-863-1111

Hilton Garden Inn Solomons 410-326-0303

A limited number of rooms can be secured at a discounted rate by contacting Bailey Casselman, sales manager of multiple Marriott & Hilton properties

BaileyC@lbaproperties.com 301-866-1416

Nationals Apparel

CORAL REEF NATIONALS STOREFRONT: Coral Reef Sailing Apparel will be producing custom nationals branded gear that you can purchase directly from their online storefront and have sent directly to you. We will have a limited number of shirts for sale onsite but all Coral Reef gear will be sent directly to the consumer.

<https://stores.crsapparel.com/2025collegesailingnationals/shop/home>

Dropping off team members before parking (See Parking and Drop Off Map)

Teams are welcome to stop briefly in front of the River Center or Kent Hall on Trinity

Visiting Team Information

2025 College Sailing Fleet Race National Championships

Hosted by St. Mary's College of Maryland

St. Mary's City, MD

James P. Muldoon River Center at the Teddy Turner Waterfront

Church Rd. to drop off team members and then move vehicles to the Campus Center parking lot. Drivers are requested to stay with the vehicle while dropping off team members. Please be conscientious and courteous to other teams. Consider this to be similar to an "airport style" drop-off. We appreciate your cooperation.

Parking (See Parking and Drop Off Map)

All teams and spectators will be parking at the SMC Campus Center (Lot K).

Field of Play Areas (See 'Field of Play' Map)

The ICSA has dedicated a restricted "Field of Play" area to credentialed regatta officials, team members and coaches only. This area will be closed to spectators. ***Each team will be issued credentials to be used for athletes and coaches.***

Team Gear Storage

Each team will be assigned their own table (and surrounding area) under the main tent. *Please make certain chairs remain in the tent.*

The James P. Muldoon River Center

The classroom and conference room will be reserved for jury & race officials only. Waterfront Offices will be the official scoring office.

Spectating and Team Tents

There will be two large tents set up; one for competitors and one for spectators, outside of the 'Field of Play'. Inside the 'Field of Play' zone; teams are welcome to set up team tents (up to 15' x 15') for viewing anywhere along the lower shoreline.

Trinity Church Graveyard

Please be respectful of the churchyard and do **NOT** set up alongside the graveyard.

Water Fountains

There are water fountains to fill water bottles on each floor of the River Center as well as next to the South Pier.

Food Trucks

We will have food trucks on site including one from Real Food Studio: <https://>

Visiting Team Information

2025 College Sailing Fleet Race National Championships

Hosted by St. Mary's College of Maryland

St. Mary's City, MD

James P. Muldoon River Center at the Teddy Turner Waterfront

www.therealfoodstudio.com/

Garbage on shore and afloat

Please dispose of trash and recycling in the proper locations. Do NOT throw any material in the water (including organic matter such as apple cores, orange peels, etc.)

ICSA Annual Meeting

Monday - May 19, 12pm

Blackistone Room, St. Mary's College of MD

Women's Fleet Race National Championship Semi-Finals

Monday, May 19th

Zoom Competitors Meeting at 7:00 pm--link posted on Techscore.

Tuesday, May 20th

9:00 Report

9:30am First warning

Wednesday, May 21st

9:00 Report

9:30am First warning. No race after 5pm

Women's Fleet Race National Championship Finals

Thurs May 22nd

9:00 Report

9:30am First warning

Friday May 23rd

9:00 Report

9:30am First warning. No race after 5pm

Awards: Will immediately follow conclusion of championship

Open Fleet Race National Championship Semi-Finals

Monday, May 26th

Zoom Competitors Meeting at 7:00 pm--link posted on Techscore.

Tuesday, May 27th

9:00 Report

Visiting Team Information

2025 College Sailing Fleet Race National Championships

Hosted by St. Mary's College of Maryland

St. Mary's City, MD

James P. Muldoon River Center at the Teddy Turner Waterfront

9:30am First warning

Wednesday, May 28th

9:00 Report

9:30am First warning. No race after 5pm.

Open Fleet Race National Championship Finals

Thurs May 29th

9:00 Report

9:30am First warning

Friday May 30th

9:00 Report

9:30am First warning. No race after 5pm

Awards: Will immediately follow conclusion of championship

Video recaps:

T2P will be producing a daily recap show of the championships that will be posted on ICSA championship website.

Care of Fleet - PLEASE

- > Raise sails only when ready to go afloat.
- > Rudders to go on only after boats are in the water
- > Rudders stowed w/ blade forward on cockpit floor.
- > Enter and exit boats from the cockpit. . . Don't step on the foredeck!
- > Stay clear of the back side of the floating docks.

Contacts:

Visiting Team Information

2025 College Sailing Fleet Race National Championships

Hosted by St. Mary's College of Maryland

St. Mary's City, MD

James P. Muldoon River Center at the Teddy Turner Waterfront

Bradley Adam

Assistant Varsity Sailing Coach

badam@smcm.edu

w) 240 895-3039

Rick Loheed

Associate Director of the Waterfront

rwloheed@smcm.edu

w) 240 895-4291

Bill Ward

Director of Sailing and Varsity Sailing Coach

wjward@smcm.edu

w) 240 895-4460

Adam L. Werblow

Director of the Waterfront & Head Varsity

Sailing Coach

alwerblow@smcm.edu

w) 240 895-4419

National Championship 'Field of Play' Map

Visiting Team Information

2025 College Sailing Fleet Race National Championships

Hosted by St. Mary's College of Maryland

St. Mary's City, MD

James P. Muldoon River Center at the Teddy Turner Waterfront



National Championship Practice Exclusion Zone Map

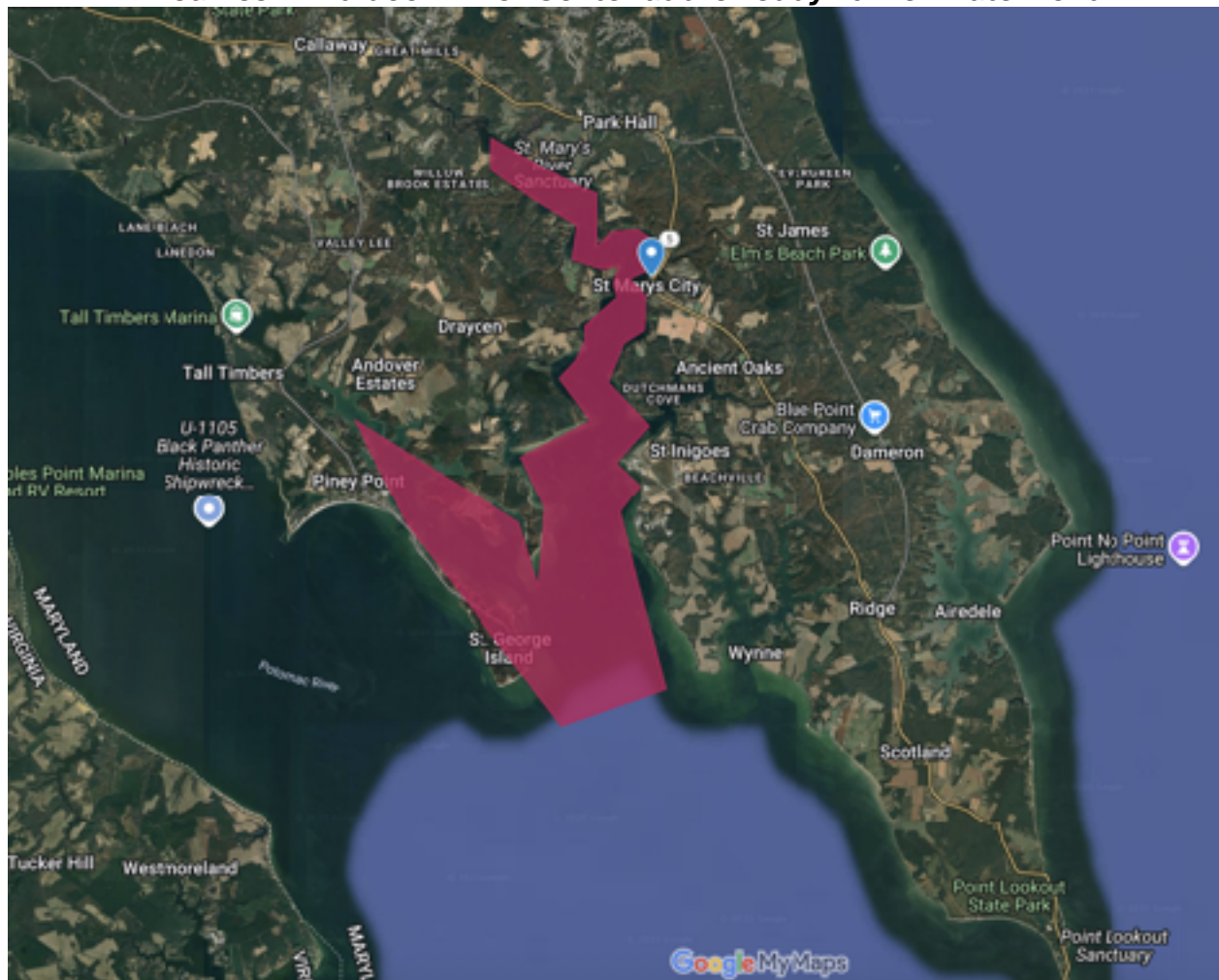
Visiting Team Information

2025 College Sailing Fleet Race National Championships

Hosted by St. Mary's College of Maryland

St. Mary's City, MD

James P. Muldoon River Center at the Teddy Turner Waterfront



Parking and Drop Off Map

Visiting Team Information

2025 College Sailing Fleet Race National Championships

Hosted by St. Mary's College of Maryland

St. Mary's City, MD

James P. Muldoon River Center at the Teddy Turner Waterfront

