



Husky Women's

Sail Sand Point
7861 62nd Ave NE
Seattle, WA 98115



10-11 February 2024

Sailing Instructions

1. RULES

- 1.1. This regatta will be governed by the current Racing Rules of Sailing and the Procedural Rules (PR) and Class Rules for Intercollegiate Sailing Competition, except as any of these are modified by these Sailing Instructions.
- 1.2. Any questions regarding these Sailing Instructions should be submitted in writing via email to Maya Outhred at huskysailing@gmail.com.

2. NOTICES TO COMPETITORS

- 2.1. Notices will be posted on the Official Notice Board located in the window of the Sail Sand Point office.

3. CHANGES TO SAILING INSTRUCTIONS

- 3.1. Any changes in the sailing instructions will be announced orally and posted on the Official Notice Board before the first race in which they are to take effect.

4. SCHEDULE OF EVENTS

Saturday, 10 February 2024		Sunday, 11 February 2024	
0930	Team check-in, rigging, and launching	0900	Rigging and launching
1000	Competitors' meeting	1000	First warning
1030	First warning	1530	No starts after this time

Any changes to the schedule above will be directly communicated to team leaders 24 hours prior to said change.

5. FORMAT

- 5.1. This will be a combined two-division (A & B Fleet), non-rotational regatta sailed in FJs.

6. RACING AREA

- 6.1. Racing will take place in front of Sail Sand Point ([7861 62nd Ave NE, Seattle, WA 98115](#)).

7. COURSES

- 7.1. Course diagrams are included in [Appendix A](#).
- 7.2. Rounding marks will be round marks.

8. THE START

- 8.1. The starting line will be between the boat flying a blue Race Committee flag and a mark across the wind from that boat. The line will be sighted between the flag and the windward edge of the starting pin.
- 8.2. Races will be started in accordance with PR 18(b)(i).

9. **RECALLS**

- 9.1. Individual recalls will be signaled in accordance with the PR 18(b)(ii). The Race Committee may attempt to hail the boat(s)' sail number(s); however, it is the responsibility of each boat to make a proper start. Failure to hear a hail is insufficient cause for granting redress.
- 9.2. General recalls will be signaled in accordance with the PR.

10. **FINISH**

- 10.1. The finish line will be between a staff displaying a yellow flag on an anchored race committee boat and a round mark.
- 10.2. If a boat is delaying the finish of a race, the race committee may end the race and score the boat in its current position.

11. **PROTESTS**

- 11.1. Boats wishing to file a protest shall hail the race committee immediately upon completion of their race and state the sail number of the boat they are protesting. The protesting boat shall notify the boat they are protesting as soon as reasonably possible upon both boats completing the race.

12. **VENUE**

- 12.1. The competitors meeting and check-in will both take place in front of the main office.
- 12.2. Parking for cars and trailers (including overnight) is available on site free of charge.

13. **BOATS & EQUIPMENT**

- 13.1. Teams that charter are responsible for providing their own sails, and are expected to return borrowed equipment in good working order.
- 13.2. Teams that charter shall alert an officer of Husky Sailing of any damaged or lost equipment as soon as possible.

14. **LAUNCHING & BOAT STORAGE**

- 14.1. Teams are encouraged to launch their boats prior to the competitors' meeting.
- 14.2. Trailers and dollies may be stored adjacent to the launch ramp during racing.
- 14.3. Some boats may be kept on the dock overnight. Those not stored on docks will need to be stored on dollies and parked in a designated area overnight.

15. **ROTATION**

- 15.1. Teams will sail the same boats for the duration of the regatta.
- 15.2. Rotations will occur off the concrete dock or floating FJ dock.

16. **SAFETY**

- 16.1. Competitors who require assistance from rescue boats should so signify by waving arms overhead. A competitor who retires from a race shall notify the race committee as soon as possible.
- 16.2. Starts will not be delayed to accommodate capsized boats.

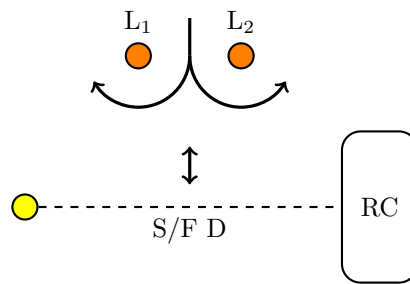
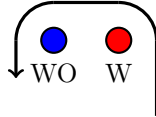
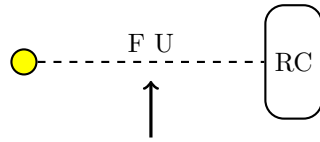
17. **COACHING**

- 17.1. PR 19 will apply.

18. **CONTACT INFORMATION**

- 18.1. Please direct your questions to Maya Outhred at huskysailing@gmail.com.

Appendix A



- | | |
|-----------|---|
| W2 | $S \rightarrow W \rightarrow WO \rightarrow F D$ |
| W3 | $S \rightarrow W \rightarrow WO \rightarrow L_1/L_2 \rightarrow F U$ |
| W4 | $S \rightarrow W \rightarrow WO \rightarrow L_1/L_2 \rightarrow W \rightarrow WO \rightarrow F D$ |
| W5 | $S \rightarrow W \rightarrow WO \rightarrow L_1/L_2 \rightarrow W \rightarrow WO \rightarrow L_1/L_2 \rightarrow F U$ |

Windward/Leeward