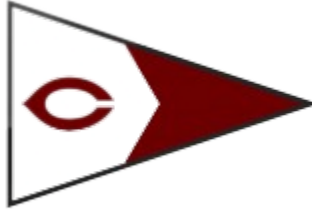


2024 MCSA Open & Women's Singlehanded Championship

Hosted by Jackson Park Yacht Club and The University of Chicago

6400 S Promontory Dr, Chicago, IL 60649

September 14 - 15, 2024



Sailing Instructions

1. DEFINITIONS:

1.1 The notation [NP] in a rule means that a boat or the race committee may not protest for breaking that rule. This changes RRS 60.1(a) and 60.2(a).

1.2 The notation [DP] in a rule means that a boat may be given a Discretionary Penalty for breaking that rule (see RRS 64.6).

2. RULES

2.1 This regatta shall be governed by the Racing Rules of Sailing (RRS).

2.2 ICSA Procedural Rules (PR), ICSA Collegiate Dinghy Class Rules and MCSA Policies shall apply.

2.3 For MCSA Championships the General Conditions for ICSA Championships shall be used.

2.4 The Notice of Race (NOR) for this event, except as modified by the Sailing Instructions, shall apply.

3. ENTRY

3.1 All Teams must be members of the ICSA and are scheduled for the event at the Annual meeting or after that by the MCSA Regatta Coordinator.

3.2 All regatta team members participating must meet ICSA eligibility requirements. [See PR 12]

3.3 Procedural Rule 15 shall apply.

4. NOTICE TO COMPETITORS

4.1 Notices will be posted on the Notice Board on Techscore:

<https://scores.collegesailing.org/f24/mcsa-open-singlehanded-qualifier/notices/>

5. CHANGES IN SAILING INSTRUCTIONS

5.1 Any changes in the sailing instructions will be announced orally before the first race in which they are to take effect and then be posted on the online Notice Board.

6. SCHEDULE

Friday, September 13

1500 - Boat drop-off & Free Practice

Saturday, September 14

0830-0930 - Registration

0930 - Competitors' Meeting

1030 - First Warning Signal

Social to follow racing

Sunday, September 15

0930 - First Warning Signal

1330 No Starting Signal After

Awards to follow racing

7. FORMAT

7.1 There shall be a maximum of 10 races sailed. The target time for each race shall be 30 minutes. There will be no rotation. This changes PR 22.b.i.

8. BOATS AND EQUIPMENT

8.1 Collegiate Dinghies (ILCA 6/7) are to be provided by the competitor.

8.2 Borrowed boats shall be considered "personal equipment". Per the Championship Conditions: "8.4 PR20 shall apply to equipment, supplied by the host or OA, but does not include personal equipment".

8.3 The Open division will be sailed on ILCA 7 boats.

8.4 The Women's division will be sailed on ILCA 6 boats.

9. ROTATION OF BOATS

9.1 There will be no rotation of boats.

10. THE COURSE

10.1 The courses will be L2, W3, or L4 and will be announced orally and are located on the course diagram(s) (see Addendum 1).

10.2 Rounding marks will be inflatable cylinders or spheres.

10.3 Any mark of the course may be moved in accordance with PR 18 (c)(i).

10.4 If one of the downwind gate marks is clearly out of place or removed, competitors shall round the remaining mark to port.

11. START

11.1 Races will be started in accordance with RRS 26. This changes PR 18(b).

11.2 The International Signal Numerical Pennant 7 shall be used as the class flag for the ILCA 7; The International Signal Numerical Pennant 6 shall be used as the class flag for the ILCA 6

11.3 The start line will be between an orange flag on the Race Committee Boat and the course side of an inflatable mark at the port end of the line.

12. FINISH

12.1 The finish line for downwind finishes (L2 & L4) will be the same as the start line.

12.2 For upwind finishes (W3), the finish line will be between a blue flag on the Race Committee Finish boat and the

upwind mark to its port side.

12.3 If one or more boats are delaying the finish of a race or a rotation, the Race Committee at its discretion may end the race and then score the boat(s) in their current position [NP].

13. RECALLS

13.1 Recalls shall be handled per Procedural Rule 18b.

13.2 The "first substitute" flag may be displayed for any general recalls.

14. PROTESTS AND PENALTIES

14.1 A Protesting boat shall make the notifications required by PR 29(b) except that "Race Committee" is changed to "Race Committee Finish Boat" (Changes PR 29(b))

14.2 Protests by a boat, or by the Race Committee or Protest Committee, or a request for redress and breakdowns shall be delivered to the race office no later than 30 minutes after coming ashore after a race in which the incident occurred (Changes PR 30).

14.3 Protest forms will be available at JPYC and shall be filed with the Protest Committee or their representative (or other location).

14.5 Penalties for breaking a rule of RRS Part 2 will be in accordance with RRS 44.1 and 44.2.

15. JUDGING

Coaches of disinterested parties to a protest may serve on the regatta protest committee, subject to PR 34.

16. COACHING

16.1 Coaching shall be in accordance with PR 19.

17. SAFETY

17.1 Competitors who require assistance from rescue boats should signify by waving arms overhead. A competitor who retires from a race shall notify the Race Committee as soon as possible.

17.2 A capsized boat may be righted and sailed by its crew unless, in the sole judgment of the Race Committee, safety or the progress of the regatta would be affected, in which case the crew shall accept assistance and the boat will be scored "DNF".

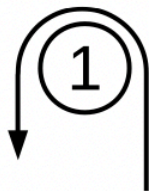
17.3 A boat that retires is asked to notify the Race Committee either before leaving the course area or immediately upon arriving ashore.

ADDENDUM 1

Courses

Course Label	Mark Rounding Order
L2	Start - 1 - Finish
W3	Start - 1 - 2s/2p - Finish
L4	Start - 1 - 2s/2p - 1 - Finish

L



W

