



SISTER ESTHER OPEN

Hosted by Salve Regina University

October 6-7, 2018



SAILING INSTRUCTIONS

1. RULES- This regatta will be governed by the rules as defined in the Racing Rules of Sailing 2017-2020, the ICSA Procedural Rules, and these Sailing Instructions. The organizing authority is the Intercollegiate Sailing Association of North America in conjunction with host Salve Regina University.

Note: RRS44.1 shall be replaced with RRS Appendix V rule V1.

2. NOTICES TO COMPETITORS- Notices to competitors will be posted on the official notice board (white board) located at the entrance to the Salve Sailing Center.

3. CHANGES TO THE SAILING INSTRUCTIONS- Any Change to the Sailing Instructions will be posted 10 minutes prior to the boat rotation for the races it will take effect. Any schedule change will be posted by 1600 on the day before it takes effect.

4. SCHEDULE- 18 races per Division are scheduled, of which three (3) races per Division shall be required to constitute a series as provided in the ICSA PR.

Saturday 1030 Report Time
 1045 Competitors' Meeting
 TBA First Warning

Sunday 10:30 Report Time
 11:00 First Warning
 1500 No Race After This Time

5. FORMAT- Racing will be held for each Division in FJs. The regatta format will be a single round robin of fleet racing.

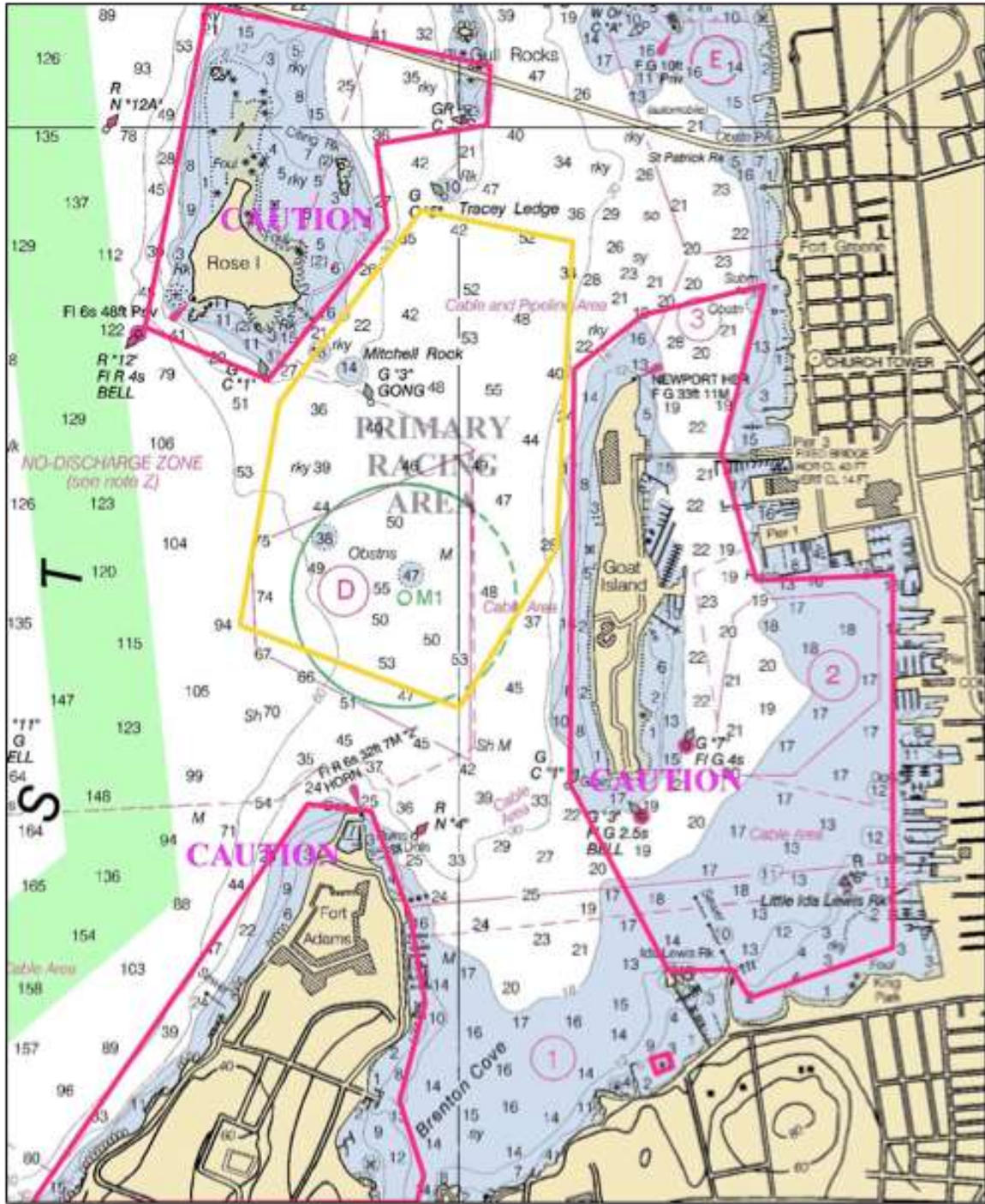
6. RACING AREA-The racing area will be on the Narragansett Bay in the approximate area shown in APPENDIX A.

7. ROTATION- The rotation of boats will be in accordance with the provided rotation sheet available at the competitors' meeting/on Techscore and will take place on the Volvo Ocean Race docks, or other docks as indicated during the competitors' meeting.

8. COURSES and MARKS- The courses are illustrated on the APPENDIX B to these Sailing Instructions. Courses will be announced verbally by the Race Committee Signal Boat

before the warning signal. If a competitor is unclear of the course, they may ask the RC for clarification at anytime before 2 mins of the start of that race.

- 9. STARTING AND FINISHING LINES; STARTING SYSTEM-** Races will be started in accordance with RRS S3. The starting/finishing (except when finishing to windward) line will be between a staff displaying an orange flag on the Race Committee Signal Boat and the water's edge (course side) of an orange starting mark. When finishing to windward the finishing line will be between water's edge (course side) of marks W1 and W2. If a boat is delaying the finish of a race, or the rotation, the Race Committee may end the race and score the boat in its current position.
- 10. PROTESTS-** Protests shall comply with the ICSA Procedural Rules. Protest forms are available in the Salve Sailing Center and shall be submitted to the Scorer. Protests shall be filed within 15 minutes of reaching the dock after a race set is completed, postponement at the dock, or the last race of the day. This changes PR 30. Hearings will be held as soon as possible.
- 11. COACHING-** ICSA PR 19 will apply, and all Coaches shall remain ashore.
- 12. DISCLAIMER-** Competitors shall participate in the regatta entirely at their own risk (see RRS 4, DECISION TO RACE). Salve Regina University does not accept any liability for material damage or personal injury or death sustained in conjunction with, prior to, during, or after the regatta.



APPENDIX A

Marks W2 o o W1

Gate L o o

o-----o Start/Finish Line

Course signals and course to be sailed

Course signals will be hailed from the RC boat at or before the warning signal. Marks W1 and W2 will be small orange/red inflatable balls. The Gate will be small white inflatable balls. Marks W shall be rounded to Port and gate L shall be rounded as a gate. For Course W3 and W5, the finish is between marks W1 and W2 (**NOT BETWEEN THE RC AND W1**).

Signal	Course
W3	Start-W1-W2-Gate L-Finish to windward between W1 and W2
W4	Start-W1-W2-Gate L-W1-W2- Finish
W5	Start-W1-W2-Gate L-W1-W2-Gate L-Finish to windward between W1 and W2

APPENDIX B Course Configuration (not to scale)